

INSIDE

In this issue

- Indoors & outdoors over summer
- Museum Team news
- Exhibition news
- Events at the Museum
- Scientific talk series
- Collection news
- Education programmes
- People around the Museum

Above: Some of the nearly 700-strong crowd that attended the Museum's Retro Rock 2020 outdoor music event on February 15.

**SOUTH CANTERBURY
MUSEUM**
EXPLORE our heritage

**Summer
2020**



Director's comment: Making heritage fun

The warmer months usually provide us with opportunities to get people exploring heritage beyond the Museum. In November this was just outside the building as once again we joined forces with St Mary's church to put on another Heritage Alive day (see bottom of next page). Then, in January, we ran several holiday programmes exploring nature and history out in the community. This included the use of a "pop-up museum", where portable displays enabled enthusiastic participants to get a closer look at things, including forest insects at the programme run at Talbot Forest reserve in Geraldine (right).

To me this sort of activity highlights the value of finding new ways of using our resources to help people explore our heritage. And while the Museum provides the best place to do this, it's great to be able to take the Museum on the road from time to time, to enhance exploration, discovery and joy in a setting such as a forest reserve or an historic site.

Making the most of the summer weather also extended to our largest annual event, **Retro Rock 2020**. A mild night saw close to 700 people outside the Museum enjoying great music from three live bands and the chance to take a nostalgia trip into the last decade of the 20th century. The highlight for me was seeing the make up of the crowd - all ages and stages - and the great atmosphere of the event. See more on page 6.

Heritage is made up of many things, and we like finding as many ways as we can to help people explore and enjoy it.

Philip



Changes to the Museum team

We ended 2019 saying farewell to Museum Educator Wendy Hurst, (centre right, along with Educator Ruth Gardiner, Education Volunteer Susan Scott and Educator Keely Kroening) who retired after joining the team in 2011. Wendy brought extensive experience as a high school teacher to our programmes, including a penchant for developing dramatised role plays of historic events that students found engaging. Her role will be filled by Marie Rapley, who commences with us in mid-February.

Our team (below) continues to roll along with a mix of volunteers, part-time and fulltime staff making everything happen. We were joined over summer by two university students employed under a TDC summer jobs scheme, Louise Rippin and Stacey Fraser (lower right).



A Timaru Landmark - a focus on a special building

A Timaru Landmark opened at the end of November and ran through until early February. With a focus on the rebuild of Timaru's Catholic Basilica, a wide range of people took advantage of the chance to learn more about the building's design and use as a photographic viewpoint in early years. A highlight was the use of backlit illustrated panels that provided a graphic look at the building's architectural details.

We were also fortunate to host a talk about the Basilica by Seán Brosnahan, a curator at Toitu/Otago Settlers Museum. Seán, who grew up in Timaru, wrote a book entitled *Thinking about Heaven: a History of Sacred Heart Parish Timaru*, and proved an engaging and entertaining speaker.



Heritage Alive, 16 November 2019

We had a perfect morning for this year's joint Heritage Alive event, held with St Mary's Church. The sun shone, the sausages sizzled, and several hundred people came to enjoy church and museum tours, watch musical and dance performances, and enjoy refreshments and a pleasant morning out. Our thanks to all who assisted in making this day happen.

Right: A Darroq vintage car on display, brought along by the SC Vintage Car Club.

Below: Performances by singer Charlotte Howe, dancer Caleb Cameron, and the Timaru Rock 'n Roll Club were among several acts that entertained a happy audience.



Exhibition news: *Live 'n Loud* at the Museum

Our latest exhibition celebrates the vibrant local rock music scene in the 1980s and 90s. Local musicians and fans provided a wealth of photographs, posters and other paper items, along with video recordings and musical instruments used during the era. The resulting exhibition provides a trip down memory lane for some, as well as an insight into a vibrant social scene that existed in simpler times.

Right: Mark and Alice Sollis standing at the front of the exhibition. Mark and Alice were instrumental in helping us get this exhibition up and running. Both were actively involved in making music in the 80s and 90s, with Alice visible in the lower photograph behind her, singing in the band **Bought and Sold** in 1991.

Lower right: A 1989 poster for local band **Tex Amplifier**, playing at the Old Mill nightclub.

Below: Julie Phillips and Margaret Cowan with a NZ Music Hall of Fame award presented posthumously to Steve Cowan, Julie's brother and Margaret's son. Steve was one of three local musicians who found national fame in the early 1980s in their band **The Dance Exponents**.

Bottom: A Squier Stratocaster guitar, one of several original 1980s instruments on display. This one was played by Alice Sollis.



Heritage Education Service kicks off a new term



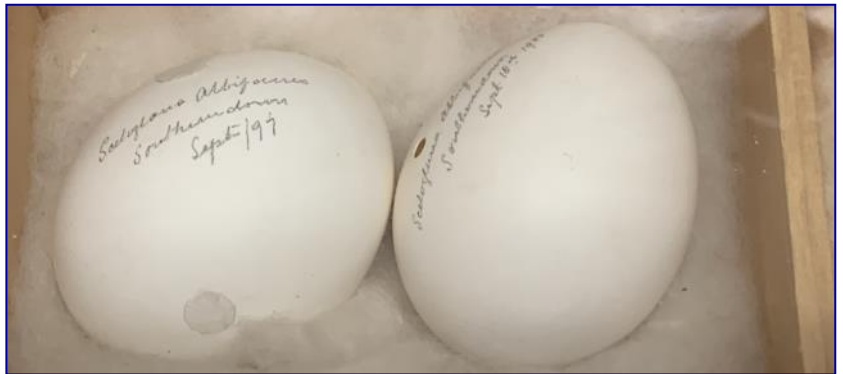
Term 1 is underway, with the Heritage Education Service fully booked for sessions both in the Museum and at sites around the district. We're joined by new team member Marie Rapley (at left with magnifying glass and colleague Ruth with net) who is working one day a week. She spent her first day with Gleniti School at Caroline Bay (below) looking at tiny creatures.



Stored collections provide resource for research



The majority of items held in the Museum's collections are not on display. However, they are an important and invaluable source for people undertaking research into nature or history. We were visited recently by Sally MacIntyre (above), an Australian-based researcher with a focus on New Zealand's extinct birds. She came to view our whekau/laughing owl specimen, along with eggs that had been collected from a site, now within suburban Timaru, in 1897 (above right). Another great example of the importance of museum collections over time.



Recent visitor comments

I really enjoyed the atmosphere of the museum! The things like a room on a ship or a phone box make me feel history. Thanks a lot!

19-35yr old visitor, Russia

Because of the smaller size it is so much easier to walk around and view the amazing contents - congratulations. Also very child-friendly, thanks.

Over 65yr old South Island visitor

As a community museum you should be very proud, in fact, based on your quality of display you are very proud of your history and community. Bravo folks.

51-65yr old visitor, Canada

Loved it! Thank you so much. A wonderful informative place of local history. I am not from here but have lived here for 10 years, thoroughly enjoyed learning about this area.

36-50yr old Timaru visitor

Very friendly and helpful staff

36-50yr old visitor, Australia

Amazing! Especially for two boys. We'll be back again and again

36-50yr old visitor, Timaru

Science focus for public talks coming up in Timaru

Kicking off on 5 March is the first of three public talks, presented jointly by the Christchurch branch of the Royal Society of NZ and the South Canterbury Museum. All are presented by leading scientists who will give illustrated talks about their areas of research.

5 March: Squawkzilla and the Giants

Dr Paul Scofield, Canterbury Museum, will talk about recent discoveries of giant penguins and parrots, and other fossil finds that are changing how we see our region's fossil past.

7pm, Timaru District Council chambers, Barnard St.

2 April: Foulden Maar: protecting NZ geological sites

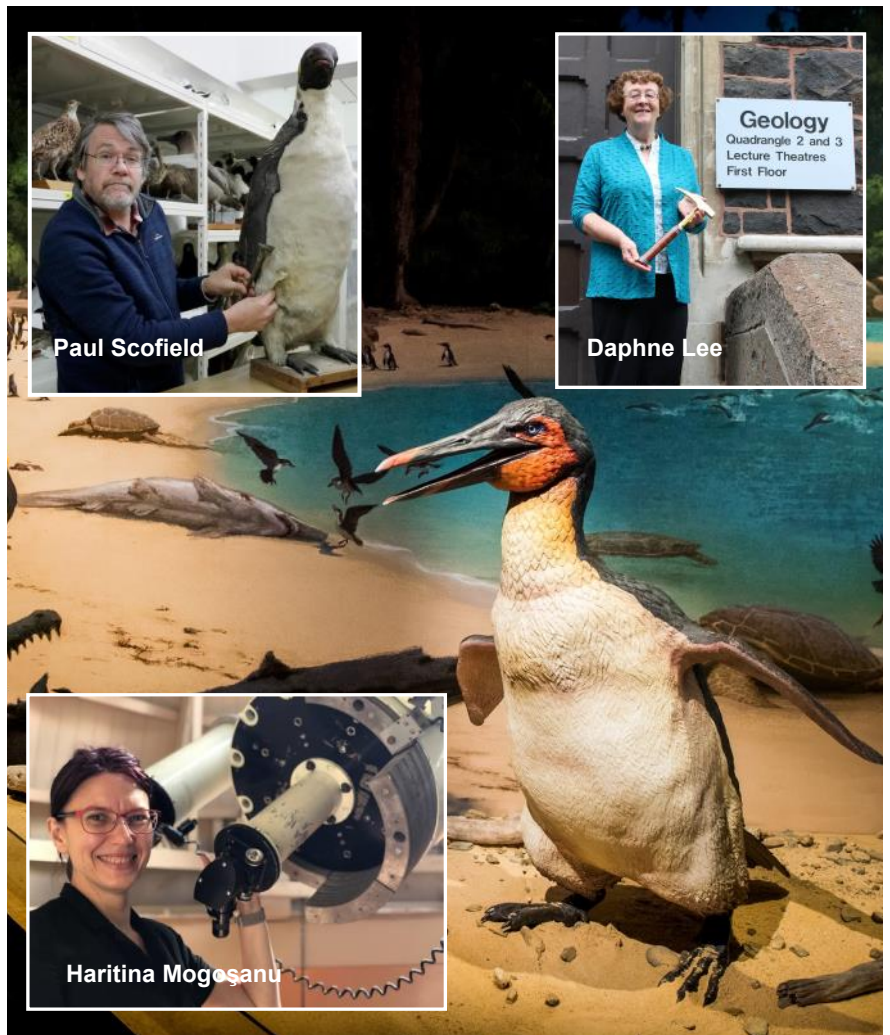
Dr Daphne Lee, Otago University, will talk about Foulden Maar and other internationally important fossil sites in Otago that are at risk.

7pm, Timaru District Council chambers, Barnard St.

13 May: Life on Mars?

Dr Haritina Mogoşanu, Carter Observatory Wellington, will present a talk on astronomy and her work on research into life forms on other planets.

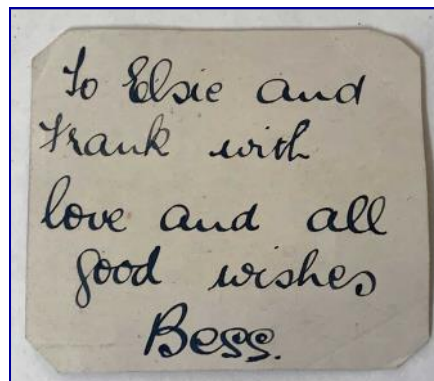
7pm, Southern Trust Events Centre, Morgan's Rd.



Recent arrivals into the collection



Above: A silver set and case, given to Elsie May Grey and Frank Prestidge on their wedding day in Timaru, 12 December 1923. It also included the note on the right, believed to be from the bride's sister Elizabeth Grey (2020/013.1).



Above right: Pak'n Save plastic shopping bag, c.2018. Now becoming rare and maybe collectable.... (2020/008.1).



Right: Lanyard and pass for the **Soundsplash** music festival held on Caroline Bay in January 2020 (2020/010.1).



Far right: Uniden DECT 2035 answer phone, c.2006 (2020/009.1).



Retro Rock 2020. Another Saturday night.....

Retro Rock 2020 was held on Saturday 15 February. This was the third annual street concert we had held, and the weather once again played along to attract a crowd of nearly 700 people. The audience enjoyed hearing from three great local rock bands, taking part in lucky number draws, an 80s/90s audience quiz and the Retro Rock fashion contest. The crowd was made up of all ages, from young families to seniors, and it didn't take long for the Perth Street dancefloor to get busy. There was a great atmosphere, most of the audience visited the Museum at some stage, and there's definitely a demand for more community events in the downtown area like this.

Our thanks to all who assisted with the event, the musicians and funding supporters, as well as the great crowd that showed up.



FaceBook page visitor comment
Thank you so so much for this event - what a wonderful evening of fun!! It was great to see all ages enjoy great entertainment and opening up the Museum for your new display throughout the evening was awesome!! What a credit to our wonderful community is our South Canterbury Museum!! Thanks to all the people that made it happen, and the generous sponsors that provided prizes ~ well done :) Proud to be a part of such a great community!

People around the Museum



Top left: Happy participants holding a replica moa egg at Centennial Park during a summer holiday programme in January

Top right: Visiting Otago Museum educators Emma, Kate and Sam, with Keely and Nadia on left and Ruth on right.

Middle left: The Polka Dots perform at November's Heritage Alive event outside the Museum.

Middle right: The Timaru Lions BBQ team do a roaring trade at *Heritage Alive* in November.

Bottom left: Jane and (Mayor) Nigel Bowen, with (Councillor) Paddy and Angela O'Reilly at *Retro Rock 2020* in February.

See more from out the front and behind the scenes on the Museum's Facebook page:

www.facebook.com/SCMuseum



Contact the Museum

Phone (03) 687 7212
Postal PO Box 522, Timaru
NEW ZEALAND
Email museum@timdc.govt.nz
Website museum.timaru.govt.nz

Become a friend of the Museum!

Receive this newsletter, invitations to Museum openings and events, members' meetings, discounts on some sales and services at the Museum and more. All Museum Friends are automatically members of parent organisation the South Canterbury Historical Society. You'll also be supporting the Museum, so it's **always** a good cause!

Membership forms are available from the Museum, simply phone, write or email and we'll send one out. But if you can't wait, send us a note with the following details and correct amount and we'll sign you up! We'll need: Name, Address, Phone no. & email if you have it.

Membership type: Individual	\$30.00
Family	\$35.00
Organisation/Business	\$35.00
Overseas	\$35.00
Life	\$300.00

Send your information and cheque for the correct amount to:

Friends Membership
South Canterbury Museum
PO Box 522
Timaru 7940