

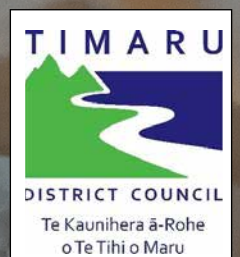
# INSIDE

**Cover image:** Local resident Bill May examines a bone specimen during a biodiversity talk at the Museum - see page 4 for more details.

## ***In this issue***

- 2024: a record year
- On now and coming up
- Exhibition & event news
- Collection news
- Education programmes
- People around the Museum and beyond

**SOUTH CANTERBURY  
MUSEUM**  
**EXPLORE** our heritage





## Director's comment: Preparing for a busy 2nd half

We're now halfway through 2025, with a strong sense that time is speeding up. BAU (business as usual) continues to be a key driver for the team, with collection management, exhibition development, education, public programmes, written communications, front of house service and retail, administration and building and asset management all requiring the team's full attention.

And the year to date has been busy, with visitor numbers around 15% above our target, school use of education programmes remains high, and continuing requests for information from both in-person and remote researchers. Another spin-off from higher user numbers is the increase in donations, aided by EFTPOS capability, and a continuing increase in retail sales.

On top of that, we're well into a new and exciting phase of designing a new museum space on Barnard Street. This will be a stand-alone museum behind the Theatre Royal, and it will house our exhibitions, education and public programmes. Unlike our current site it will be a very accessible building, both for the public and for travelling exhibitions and large objects.

This project will take up a lot of curatorial time as we work with the architects to get the building layout finalised. We will also continue to develop exhibition content for the long-term displays planned for the upper floor of the new facility. This will draw upon the work and designs from the previous Heritage Hub project cancelled in July 2024. We are working to tell our region's stories of nature, history and culture in ways that engage our visitors, wherever they are from.

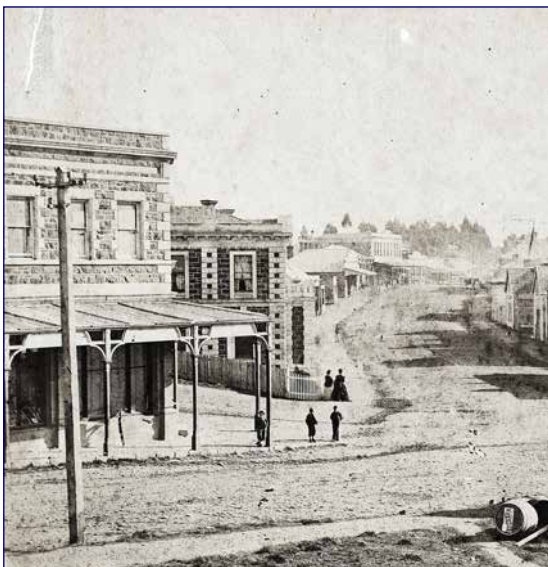
This work will also require additional funding, and the South Canterbury Museum Development Trust will be gearing up to help raise much of the estimated \$3 million required to do this work. The finished result will draw heavily from our rich collections of objects, images and information, and use a variety of these display techniques to engage and inform viewers.

Keep an eye out for more information soon. And also for ways in which we can all support this exciting development.

*Philip*



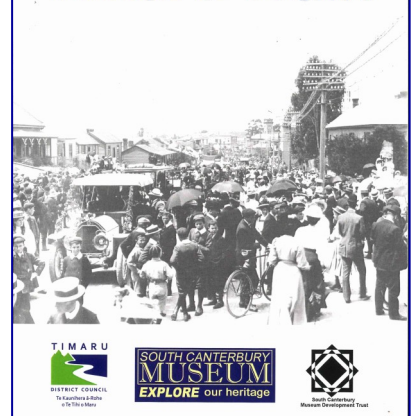
## Unlocking downtown's heritage



We now have a new historic walk booklet available for purchase that features 18 images from Timaru's CBD from the last 160 years, giving people a chance to view how our streetscape has changed. The booklet was produced by the Museum with funding support from Venture Timaru, and can be used by school groups and casual explorers alike to follow a route and uncover our urban heritage.

There are a series of organised tours planned using the booklet which will benefit the SC Museum Development Trust's fundraising efforts for the new museum - keep an eye on our Facebook page and website for details.

### Downtown Timaru Walk





## Exhibitions July to October 2025



**World In Flames: South Canterbury & World War II** opened in April and is running through until August 10. The exhibition marks the 80th anniversary of the end of the Second World War in Europe and the Pacific, and takes an overall look at how our region was impacted by the War.

Curator Chris Rapley has drawn upon collections of artefacts and images to outline where local people served, as well as the impact at home. A number of individual local people's stories are also included.



**Herstory of Women's Rugby** is coming in August and running through until Labour Weekend, timed to align with the Women's Rugby World Cup competition in the UK, where local Jorja Miller will be one of the Black Ferns representing New Zealand.

The exhibition is toured by the New Zealand Rugby Museum, and tells how women's rugby has grown in this country to create international champions.

# HERSTORY OF WOMEN'S RUGBY.

## **Retro Rock at the Museum 2025: Lucky No. 7**



**Retro Rock at the Museum** returned on 15 February, once again drawing a 500+ crowd, with great local acts performing on a fine calm night. Four bands, a local dance troupe, audience activities with sponsored prizes and an open Museum for quieter time-out resulted in another successful version of what was originally planned to be a one-off event in 2018. There is clearly a demand for fun public events like this in the downtown area.





## Recent events around the Museum and beyond



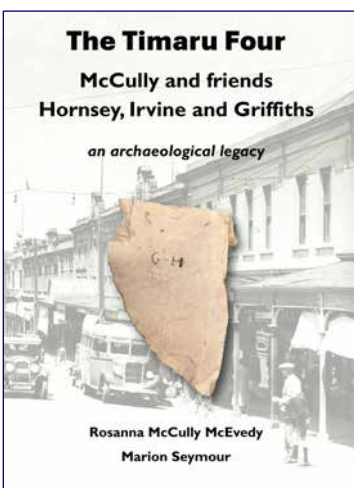
**World in Flames opening.** This exhibition commemorates 80 years since the end of the Second World War. It opened on 12 April and runs through until August 10. A good number of attendees at the opening enjoyed refreshments and live music from Timaru's Rythmix singers (left), and heard from Curator Chris Rapley (setting up exhibition at right) about the exhibition before it was opened by Timaru District Mayor Nigel Bowen.



**Regional Museums Meeting.** In April we hosted staff from six regional museums and galleries, providing attendees with the chance to hear from others about a range of topics and discuss their work. These included new displays, institutional updates, fire arms in collections and other subjects of mutual interest (at right).



**Timaru Four book launched.** On June 18 a second book written by authors Rosanna McEvedy and Marion Seymour was launched at the Museum. This book *The Timaru Four: McCully and Friends Hornsey, Irvine and Griffiths, an Archaeological Legacy*, examines the lives and times of four local men who were ardent amateur archaeologists in the early-mid 20th century.

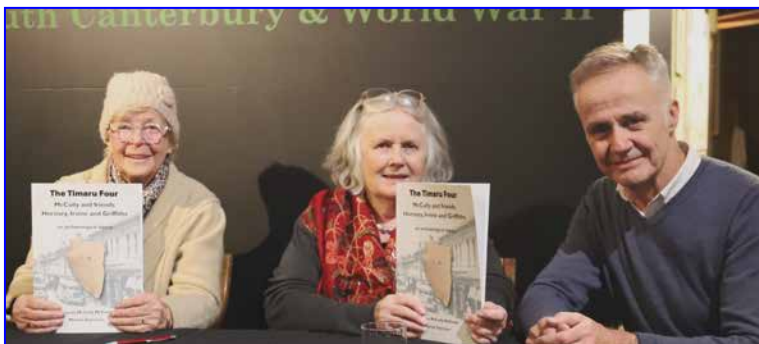


These men collected widely around South Canterbury and parts of Otago. Much of their collected material ended up in regional museums, including ours. The book explores their common interests and backgrounds, along with their relationships with museums, archaeologists and tangata whenua. It has been published by the SC Museum Development Trust and is available from the Museum for \$40, with proceeds going to the Trust. This book follows on from last year's publication by the same authors, *Inside Theo Schoon's Tipping Point*.



**Above:** Hugh McCully with Ben Evans and his sons in the Mackenzie country c.1925. Evans Family collection.

**Below;** Authors Marion Seymour and Rosanna McEvedy with Museum Director Philip Howe at the book launch, and signing books below.





## Recent events around the Museum and beyond

**Museum Team visit to Arowhenua Bush.** In February some of the Museum Team were able to visit Arowhenua Bush, a small but significant patch of regenerating lowland podocarp/broadleaf forest now owned by SC branch of Forest & Bird. We were privileged to hear from member Fraser Ross, now in his 90s (seated, below), who led the campaign to save, restore and eventually purchase the forest remnant surrounded by intensive agriculture. Museum Director Philip (right) took the opportunity to survey forest-floor invertebrates, finding at least three beetle species endemic to South Canterbury, indicating the health and importance of the restored ecosystem.



**10,000 years of local biodiversity** In May and June Museum Director Philip Howe delivered two talks about our region's changing avian biodiversity over the last 10,000 years. Attendees booked and paid for their places, and were given an illustrated talk, the chance to handle specimens and replica items, and have a guided tour of the Museum's natural history exhibition area. The talks were fully booked, with proceeds going towards the Museum Development Trust, raising funds for future exhibition development. We are now looking at providing a range of similar talks and handling sessions.





## Recent additions to the collections



We continue to add recent donations to our collections. This is a key part of the Museum's work, and ensures we capture all known details about items, ensure their ongoing care, and track their location and ongoing use in the Museum.

**Left:** Part of a set of Rockingham fine china exhibited by Ethel Chapman in 1925 at the Timaru Arts Society exhibition (2025/035.1).

**Right:** A local Snowcrest glass milk bottle c.1985 (2025/036.1)

**Below:** An early 1980s Fountain Programmable Video System games console - the beginnings of the computer gaming era (2025/038.01).



**Left:** A Queen's Message Relay singlet worn by local athlete Chris Tobin in 1974 during the Christchurch Commonwealth Games.

Chris had a long and successful athletic career, and participated in many national & international events. He has kindly donated a large number of clothing items and awards to the Museum (2025/023.002).



## Connecting with collections



**Left:** The descendants of Timaru bicycle retailer George Ayling, including his son Geoffrey, 99, visited recently and saw one of his bikes from the 1930s on display. George assembled and sold Minerva brand cycles in his shop, including this one.



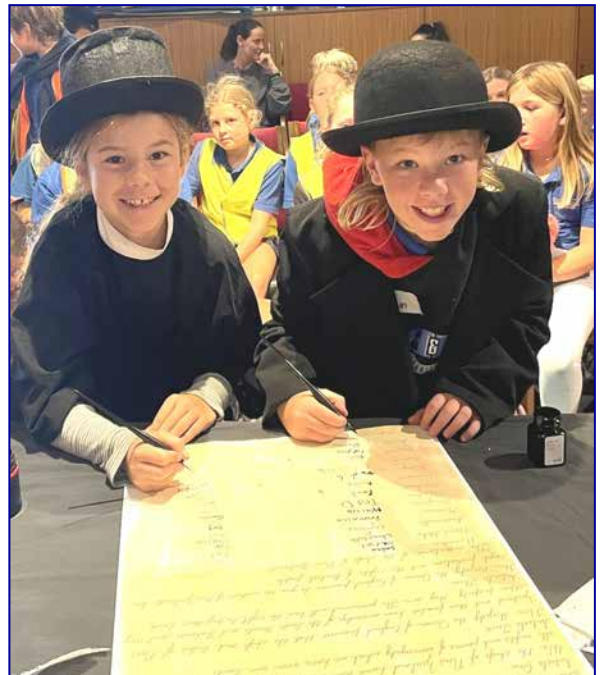
**Right:** Our collection of historic cans and food containers was used for a photographic project by a local Polytech design student. Our stored collections are a useful resource for study, education and creativity.



## Heritage Education turning 21!



2025 marks the 21st year of our Heritage Education Service's operation. Set up with Ministry of Education funding in 2005, the service is an essential learning resource for many local schools. This year Keely and Ruth were joined by Andrea Askin-Mills (at right in photo above), just in time for a busy Term 1 which saw our educators out in the field conducting nature studies and town history walks, or in the Museum for dramatic recreations of the Treaty of Waitangi. By the end of Term 2, over 4,000 students, ranging from early childhood education to senior high school level will have participated in our programmes this year. And to top it off, our Ministry of Education contract, which ends in December, has been rolled over for another 12 months. We're planning an exhibition in November that looks at the first 21 years of the Service's operation.





## People around the Museum (and beyond)



**Above:** Museum users seem to be getting younger these days! On the left is Museum Explorer Asha who introduced her baby doll Annabel to the Museum, on the right a happy young learner from Craighead Kindergarten looking at a hairy seaweed crab at Waitarakao/Smithfield beach.

**Above right:** Museum technician John Lloyd commenced his role in March, and found himself handling an elephant fish as he prepared to install items in a revamped marine life display.

**Below:** Museum Educator Keely Kroening got up close and personal with a live endangered Otago skink at a recent talk by lizard expert Anna Yeoman at South Canterbury Eco Centre.



**Above:** Trying their hardest to blend in at **Retro Rock 25** are Museum Development Trust chair John Simpson and Museum Director Philip Howe. The donation buckets were used to meet the night's costs.

See more from out the front and behind the scenes on the Museum's Facebook page: [www.facebook.com/SCMuseum](http://www.facebook.com/SCMuseum)



South Canterbury Museum is part of the Community Services Group of Timaru District Council

### Contact the Museum

Phone (03) 687 7212  
Postal PO Box 522, Timaru  
NEW ZEALAND  
Email [museum@timdc.govt.nz](mailto:museum@timdc.govt.nz)  
Website [museum.timaru.govt.nz](http://museum.timaru.govt.nz)

## Become a friend of the Museum!

Receive this newsletter, invitations to Museum openings and events, members' meetings, discounts on some sales and services at the Museum and more. All Museum Friends are automatically members of parent organisation the South Canterbury Historical Society. You'll also be supporting the Museum, so it's **always** a good cause!

Membership forms are available from the Museum, simply phone, write or email and we'll send one out. But if you can't wait, send us an email with the following details and correct amount and we'll sign you up! Name, Address & phone number please.

<b>Membership type:</b>	Individual	\$30.00
	Family	\$35.00
	Organisation/Business	\$35.00
	Overseas	\$35.00
	Life	\$300.00

You can pay over the counter at the Museum or by bank deposit to the following account

Bank account number: **02 0888 0028865 000**  
Reference: your **surname**  
Code: **SUB**

And again, please don't forget to email us your full name, address and other contact details when you've paid.